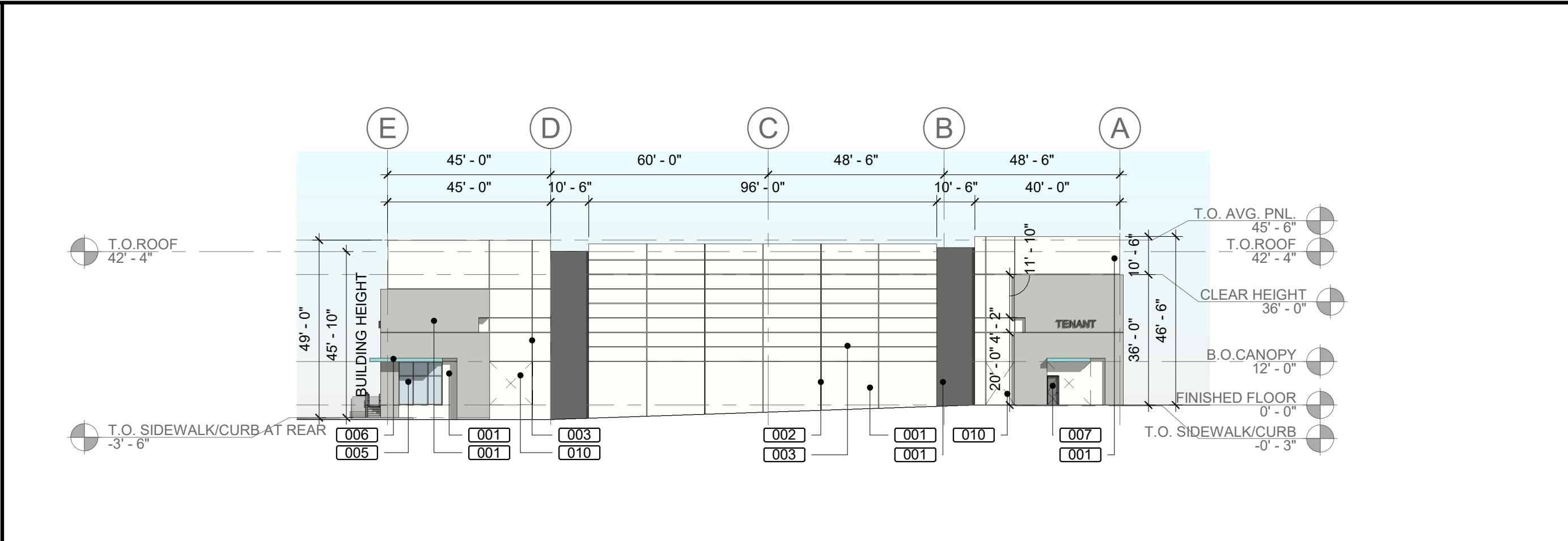


4

BUILDING 2 EAST ELEVATION

A-2.20

SCALE: 1" = 30'-0"

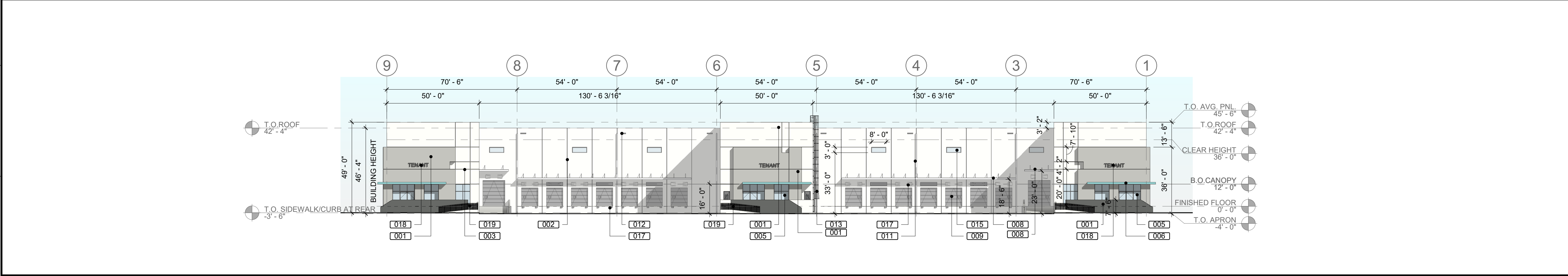


3

BUILDING 2 WEST ELEVATION

A-2.20

SCALE: 1" = 30'-0"

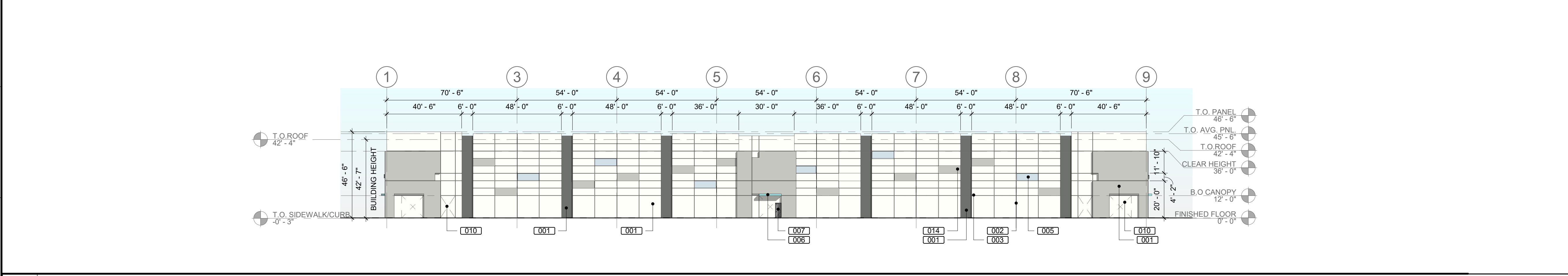


2

BUILDING 2 NORTH ELEVATION

A-2.20

SCALE: 1" = 30'-0"



1

BUILDING 2 SOUTH ELEVATION

A-2.20

SCALE: 1" = 30'-0"

GENERAL ELEVATION NOTES

1.

PROVIDE MEDIUM TEXTURED ACRYLIC COATING WITH INTEGRAL BASE BUILDING COLOR (TEX-COAT XL-70 OR APPROVED EQUAL) ON ALL EXTERIOR WALLS EXCEPT DOCK AREA WALLS. ACCENT COLORS AND DOCK AREA WALLS TO BE PRIMED AND HAVE TWO (2) COATS OF COMMERCIAL QUALITY GRADE LATEX PAINT. WHERE DARK COLORS ARE USED, PROVIDE SATIN FINISH LATEX.

2.

MISCELLANEOUS METALS INCLUDING EXTERIOR EXPOSED METALS (I.E. HANDRAILS, LADDERS, BOLLARDS) TO HAVE ONE (1) COAT OF PRIMER AND TWO (2) COATS OF COMMERCIAL QUALITY ENAMEL PAINT.

3.

CONTRACTOR TO PROVIDE SAMPLES OF COLORS OF ACTUAL BUILDING FOR OWNERS FINAL REVIEW.

4.

REFER TO ELECTRICAL PLAN FOR LIGHT FIXTURE SPECIFICATIONS.

5.

RETURN ALL REVEALS AT PANEL OVERLAP. TYP. REFER TO ENLARGED ELEVATION FOR COLOR PLACEMENT.

GENERAL NOTES

1.

ALL CONCRETE WALLS TO BE TREATED WITH TEXTCOE MEDIUM TEXTURE.

2.

ALL STOREFRONT TO BE CLEAR ANODIZED AND GLAZED PER MIAMI-DADE REQUIRED HURRICANE RESISTANCE WITHOUT THE USE OF SHUTTERS.

3.

ALL FUTURE TENANT SIGNAGE TO BE PERMITTED SEPARATELY.

4.

6" TALL WHITE ADDRESS NUMBERS ARE TO BE PLACED OVER EVERY TENANT ENTRANCE PER FLORIDA FIRE PREVENTION CODE.

KEYNOTE LEGEND

001

TILT-UP CONCRETE WALL (TYP. PAINTED)

002

PANEL JOINT

003

2" REVEAL PATTERN

005

TINTED GLASS IN IMPACT RESISTANT ALUMINUM STOREFRONT SYSTEM

006

PAINTED CONCRETE CANOPY

007

METAL MAN DOOR

008

ALUMINUM CANOPY

009

STEEL OVERHEAD DOOR

010

KNOCK-OUT PANEL

011

METAL COLLECTOR AND DOWN SPOUT (PAINT TO MATCH ADJACENT WALL)

012

EMERGENCY OVERFLOW SCUPPER

013

STEEL LADDER AND CAGE WITH LOCKABLE GATE

014

1" RECESS (PAINTED)

015

CLERESTORY WINDOW

017

RUBBER DOCK BUMPER (TYP.)

018

TENANT SIGNAGE

019

ALUMINUM POST AND PIPE RAILING

PAINT LEGEND

PT-1

SHERWIN WILLIAMS

SW 7757

HIGH REFLECTIVE WHITE

PT-2

SHERWIN WILLIAMS

SW 7065

ARGOS

PT-3

SHERWIN WILLIAMS

SW 7068

GRIZZLE GRAY

PT-4

SHERWIN WILLIAMS

SW 9045

BORA BORA SHORE

NOTE:

TO THE BEST OF THE ARCHITECTS KNOWLEDGE, THE PLANS AND SPECIFICATIONS COMPLY WITH THE APPLICABLE MINIMUM BUILDING LOCAL AUTHORITY IN ACCORDANCE WITH THIS SECTION AND CHAPTER 633 CODES AND THE APPLICABLE FIRE-SAFETY STANDARDS AS DETERMINED BY THE , FLORIDA STATUTES.

DRC SUBMITTAL

12/17/2025